

Unity on Greenville well above average says church survey

By Kathy Tracy

Spirit Express Newsletter, Fall 2007

On Sunday, Aug. 26, the Board of Trustees, Rev. Steve Colladay and church leaders held a Town Hall meeting to discuss and review the results of the “Church Life Survey,” which was administered at Unity on Greenville on June 3 and 10 of this year.

The Revs. Robert and Janet Ellsworth of “Thriving Churches” (www.thrivingchurches.org) studied 140 growing churches and found certain characteristics that were necessary to grow healthy, thriving churches. Through application of this survey, they can identify which ministry aspects change lives and grow churches. Church communities thrive when these aspects become strong.

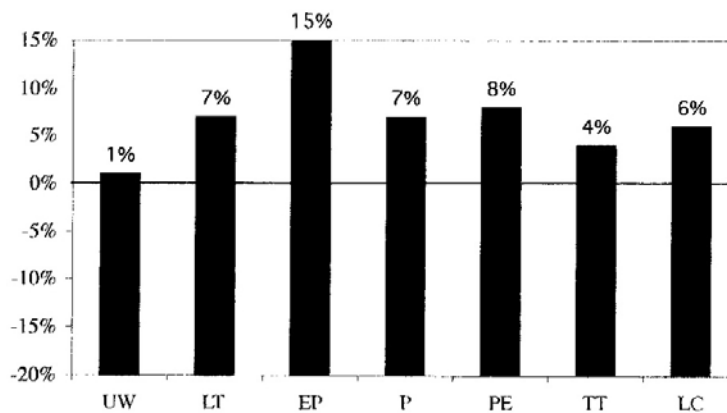
We are pleased and grateful to announce that the results were very positive. Unity Church of Christianity scored above the norm in all seven essential areas. These results measure the perception of our ministry and as you can see, the perception is good. These findings are a well-deserved ‘pat on the back’ for all of our leaders’ hard work and they also will help them to determine which areas need special attention.

During the meeting, the attendance and income figures were also discussed. When compared to last year, the figures increased during almost every month — we must be doing something right!

Rev. Steve also distributed copies of “The Supreme Makeover:” a wish list of things that are needed in and around our church home. Stay tuned — more to come on this topic.

Overview of Your Church Life Survey Results

This is a picture of your congregation's perception of your ministry. You can see which ministry essentials have exceeded the norm, the minimum found in growing churches. You can also see your greatest possibilities for constructive change.



UW = Uplifting Worship: Songs uplifting, sermons inspire, emotional release, etc.
LT = Leadership Team.
EP = Empowering People: People encourage me, safe place, training occurs, etc.
P = Purpose: Leaders communicate clearly this church's purpose or mission.
PE = Prayer Emphasis: This church really shows people how to pray.
TT = Transforming Teachings: Attend classes, read/apply spiritual teachings, etc.
LC = Life Changing Impact: Coming here makes positive difference, etc.